



Fast Facts:

Purchase Price: \$39,000 (Plus Inventory)

Use: Smoke Shop

Size: 928 Sq Ft

Rent: \$1,100+NNN \$460 Total \$1,560

Lease: 2013

Gross Sales: \$269,000 +

Net Cash Flow: NA

Employees: Owner Operated

Years in Business: 2002

Hours of Operation: 8:30 AM – 7PM

Reason for Sale: Moving Out of Area

Business Opportunity:

Valley Smoke Depot

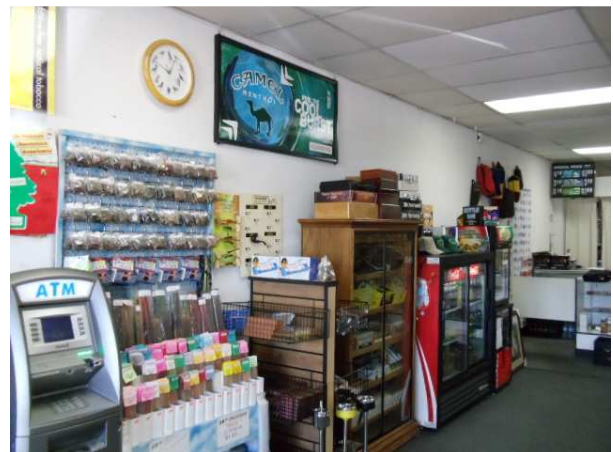
35-877 Date Palm Drive, #D7

Cathedral City, 92234

BY BROKER APPOINTMENT

Description:

Valley Smoke Depot is located in a large neighborhood shopping center with ample parking. This is an excellent location with many housing and condominium developments in the area. Valley Smoke Depot has a good solid clientele of year round customers as well as seasonal customers. They have everything you need for tobacco use. Accessories for smoking, pipes, papers for hand rolling your own cigarettes and much more. ATM for added revenue. Competitive prices and a large selection of inventory. Also, includes gift shop. Please call broker to get more details on this listing.



00006911

This information, while not guaranteed, has been obtained from sources deemed reliable. Buyer must verify the information and bears all risks for any inaccuracies. DRE #01366091